

EU1008

Description:

Formed acrylic box pendant in various sizes cable mounted to center canopy with surface mounted or remote driver.

Sizes:

Size A: 24" W x 8" H
Size B: 30" W x 10" H
Size C: 36" W x 8" H
Size D: 42" W x 10" H
Size E: 60" W x 12" H

Finishes:

BN: Brushed nickel canopy and mounting hardware

Illumination:

Delivered lumens with white acrylic @ 4000K

Size A: LPPD1: Delivered lumens 4412
Size B: LPPD1X2 : Delivered lumens 8825
Size C: LPPD1X2: Delivered lumens 8825
Size D: LPPD1X2: Delivered lumens 8825
Size E: LPPD3x2: Delivered lumens 8825

Drivers:

Universal 120-277 V input , 0-10 V dimming

Driver Location:

CSF: Drivers in surface mounted canopy
RM: Drivers located remotely above ceiling in NEMA enclosure

Mounting:

CS-CSF-CBL: Cable supported to center canopy
STM-CS-CSF: Stem supported along with perimeter cables

Component replacement:

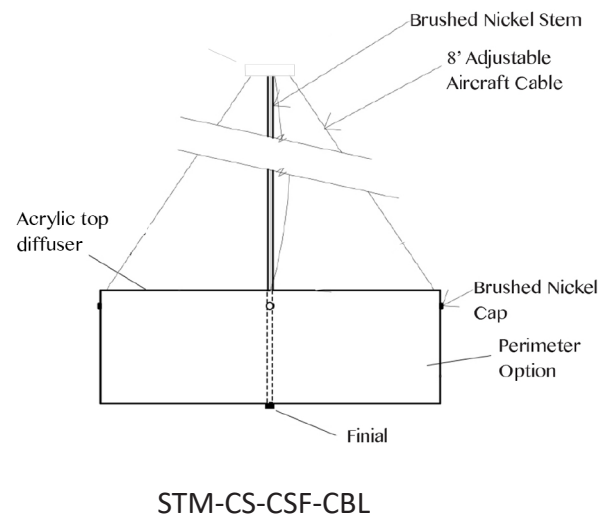
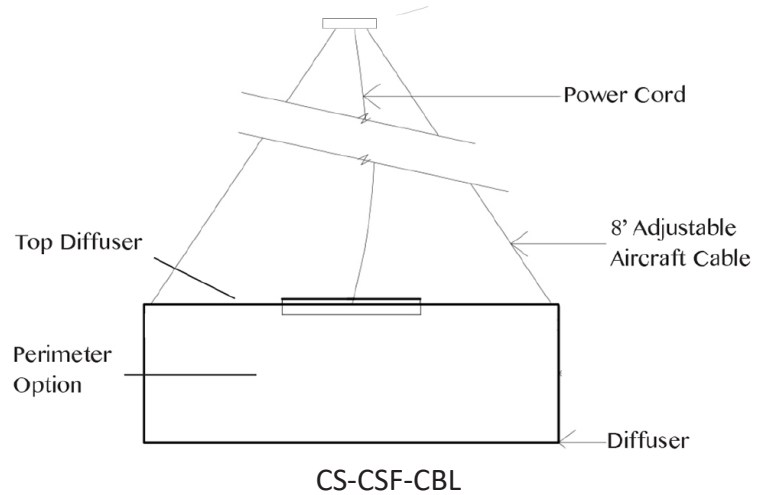
Field replaceable

Electronic Warranty:

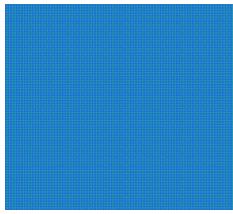
Extended Electronic manufacturer's 5 year limited

Certification:

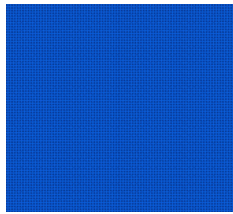
UL listed indoor



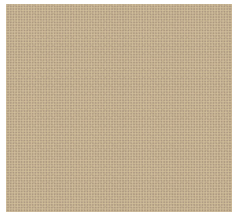
DIGITAL PERIMETER OPTIONS



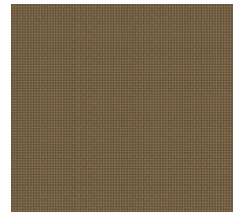
Aqua Micro



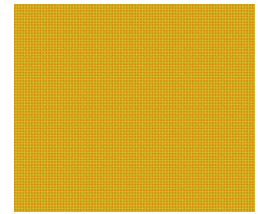
Blue Micro



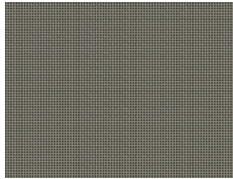
Beige Micro



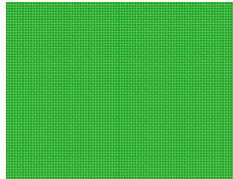
Brown Micro



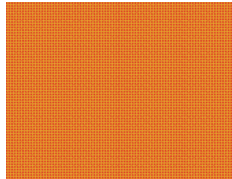
Gold Micro



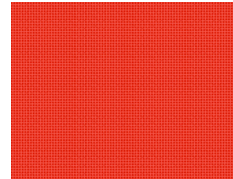
Gray Micro



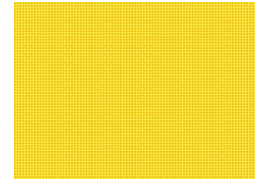
Green Micro



Orange Micro



Red Micro

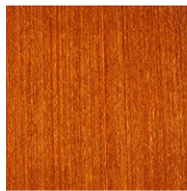


Yellow Micro

NATURAL WOOD VENEER PERIMETER OPTIONS



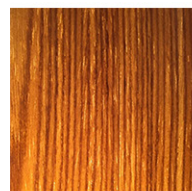
Light Aspen Gray



Mahogany



Douglas Fir



Oak



Poplar

ORDER KEY

Model	Size	Finish	Perimeter Option	Illumination	Color	Mounting	Wattage
					Temperature		
EU1008	A	BN	WA	LPPD1	3000	CS-CSF-CBL	33
	B		CA	LPPD1X2			67
	C		WV	LPPD1X2			67
	D		DP	LPPD1X2			67
	E			LPPD3X2			90